



Welcome Information Spring 2021 Undergraduate Students



CONTACT INFORMATION

The Global Education Office

2120 Mesa Vista Hall (Central Campus Map Building #56)

Office Hours: Mon – Fri 8:00 AM–5:00 PM

Advisement Hours: By appointment Mon-Friday 10 AM – 3 PM

Telephone Number: 505-277-4032

Email for Advisor Questions: iadvisor@unm.edu

Email for General Questions: geo@unm.edu

Web: geo.unm.edu

Social Media: [UNMGlobal](#)  

Dear International Student,

Congratulations on your acceptance to the University of New Mexico (UNM) for Spring 2021! We are writing to you from the Global Education Office, also called GEO. GEO is the office on campus that provides services for all international students at UNM. Here at GEO, we are excited to welcome you as a new member of our global Lobo family!

The GEO office is located at 2120 Mesa Vista Hall, directly east of the Student Union Building (in building #56 on the enclosed UNM campus map). GEO advisors can answer questions you have about visa, immigration, travel, and work requirements. We also organize many fun events for international students. Arrival information and videos for new students are on our incoming student website at:

http://geo.unm.edu/students/coming_unm/index.html

Review this website and the enclosed information NOW to be sure you are aware of all mandatory arrival dates and requirements for new students.

All undergraduate international students beginning studies in Spring 2021 are **REQUIRED** to arrive **BY** Monday, January 4th for the mandatory international student check-in and potential 14-day quarantine. A recommended arrival schedule is included in this letter.

Late arrivals **MUST** be reported in writing to **iadvisor@unm.edu** and be approved in advance! You **CANNOT** arrive late without permission and will not be able to arrive more than one week late **UNDER ANY CIRCUMSTANCES!** Please contact GEO if you have questions.

Sincerely,



Phillip Gill
International Advisor



Carolyn Kaltenbach
International Advisor



Ivet Rosev
International Advisor



Linda Melville
Director, International Student and Scholar Services,
Global Education Office, UNM

THIS LETTER CONTAINS THE FOLLOWING INFORMATION:

- I. Required Arrival Dates and Details
 - a. When to Arrive
 - b. Orientation Requirements
 - c. Check-in Requirements
 - d. ACT/SAT Test Scores
- II. Arrival and Housing
 - a. How to Get to Campus
 - b. Airport Pick-up & Temporary Home-Stay
 - c. Housing Options
- III. Immigration Documents and Visa Application
 - a. Certificate of Eligibility (I-20 or DS-2019)
 - b. Visa Requirements
 - c. Required SEVIS fee
 - d. When to Apply for the Visa and What to Bring to the Consulate
 - e. The Visa Interview
 - f. Instructions for Students Who are Currently Studying in the US
- IV. Preparing to Come to UNM
 - a. How soon can I arrive?
 - b. What You Need to Enter the U.S.
 - c. Health Insurance
 - d. What to do before you leave home
 - e. Incoming Student Information & Connecting with Other Students
- V. Registration for Classes and Tuition and Fee Payment
 - a. Registration for Classes
 - b. Setting up Your UNM Net ID
 - c. Tuition and Fee Payments
- VI. Arrival Checklist

I. REQUIRED ARRIVAL DATES AND DETAILS

a) When to Arrive

Recommended Arrival Schedule:

- **January 4:** Arrive in NM (you may be required to quarantine for 14 days upon arrival in NM). To request early move-in for UNM Student Housing, email housing@unm.edu for move-in dates and requirements. You are not required to live on campus and campus housing is limited, so please reserve early if you want to live on campus.
- **January 7–15** Attend **MANDATORY international check-in and info sessions on Zoom after arrival at UNM. The check in is in 2 parts: a) myGEO account set up and b) arrival info session. Both are required. Sign up information will be provided at orientation (see below). You should only sign up for check-in after you arrive at UNM.**
- **January 15–18:** Finalize class schedule, explore campus, attend fun events
- **January 18:** Dr. Martin Luther King Jr. Holiday (No Classes)
- **January 19:** Begin classes

The date you arrive is CRITICAL for a smooth transition to student life! If you are outside the U.S., you cannot arrive more than 30 days before the start date listed on your I-20 or DS-2019 form. **You should plan to arrive as early as possible. If you cannot arrive BEFORE, Thursday, January 14th,** please email iadvisor@unm.edu for late arrival permission.

b) Orientation Requirements

ALL Undergraduate International Students must attend **BOTH:** 1) GEO orientation **AND** 2) UNM New Student Orientation (NSO) before arriving in Albuquerque. Each orientation is required.

1) GEO Orientation

GEO will offer orientation to UNM over 3 sessions in the fall. Because these sessions will cover different topics and important arrival information you should plan to attend all 3. These sessions will be on:

- October 16th at 8 AM Albuquerque, NM MST
- November 13th at 8 AM Albuquerque, NM MST
- December 11th at 8 AM Albuquerque, NM MST

These sessions will be on Zoom: <https://unm.zoom.us/j/97205285468>

Password is: [GEOlobo](#)

You will be asked to access orientation material through our Microsoft Teams group. First, you will need to create a UNM net ID (directions are provided on page 14).

Link for Microsoft Teams:

<https://teams.microsoft.com/l/team/19%3a17e19f886c0a4123b4da1dba893f0393%40thread.tacv2/conversations?groupId=516c6ac8-876d-49a1-853f-0ea18469216a&tenantId=25aa9830-e0f9-482b-897e-1a3b3c855e5c>

2) UNM New Student Orientation (NSO)

ALL Undergraduate International Students must attend one UNM New Student Orientation (NSO). If you already attended a UNM New Student Orientation in summer 2020, you do not need to attend again, but you MUST email nso@unm.edu and ask them to remove your orientation hold so you can register for classes in November when registration opens.

If you have NOT already attended a UNM New Student Orientation, register for one of the three sessions at: <https://nso.unm.edu>. You cannot enroll for classes until you complete NSO, so you want to register as soon as possible to get the best choice of classes.

DO NOT MISS YOUR REQUIRED ORIENTATIONS! REMEMBER: There are three holds on your UNM account that stop you from being able to register for classes until you attend your required orientations:

- 1) New Student Orientation (UNM) hold
- 2) Academic advisement hold
- 3) GEO orientation hold (begins on January 1, 2021 and lasts until you come to check-in)

c) **GEO Check-in Requirements**

After you arrive in New Mexico, you MUST sign up for a two-part virtual GEO Check-in. After you attend, we can remove your GEO orientation hold that will prevent you from changing your registration schedule after January 1, 2021. Check-in includes 1) **myGEO** portal set-up and document upload and 2) Arrival information session.

The information you are required to provide during the check-in includes:

- E-copies of all immigration documents (passport, I-20/DS-2019, visa and I-94 [only available after entry to the US])
- Proof of health insurance coverage (requirements explained below)
- UNM email address (NetID@unm.edu)
- Local residential address and an emergency contact address

Failure to complete all requirements by the end of the first week of class may result in administrative withdrawal from the University and may mean that you would have to leave the country!

d) **ACT/SAT Test Scores**

Students who do not have an ACT/SAT score on file will ALSO need to do a Math placement test. You will receive emails if you need to take the Math placement test with detailed instructions. You will be able to take this test virtually. If you have an ACT/SAT score that you have not reported to UNM, please report it now so that you do not have to take the placement test.

If you will not arrive by January 14th, you must contact iadvisor@unm.edu for special late arrival approval in advance. International students will also need permission to arrive late!

II. ARRIVAL AND HOUSING

a) How to Get to Campus

If you will not be picked up from the airport, taxis and Uber/Lyft to UNM and to hotels near campus are relatively inexpensive (less than \$20). Bus #50 goes from the airport to the UNM campus in 10 minutes for \$1 (exact change only). Ask the bus driver to let you off at UNM (the intersection of Yale and Central Avenues).

Students moving in to campus housing will need to get to the SRC Commons Building (Building #89 on the enclosed UNM central campus map; this map is also on the UNM website at <http://ppd.unm.edu/campus-maps.html>). If you are moving in to campus housing, make sure you arrive during approved move-in times. You should receive email with move-in instructions.

b) Airport Pick-Up & Temporary Home-Stay

○ **UNM Student Group Pick-up**

UNM student groups sometimes provide airport pick-up and temporary homestays for new students. Check the UNM Student Activities website at <http://sac.unm.edu/index.html> under [Student Orgs](#) to see if there is a group from your country and if so, email the contact to see if they offer this service to new students. Please be aware that this page is taken down in summer.

○ **Airport Pick-up and Homestay Offered by ISI (Local Community Christian Organization – NOT UNM)**

A non-UNM, community Christian volunteer organization called ISI (International Students, Inc.) offers free airport pick-up and a temporary home-stay with a local family usually lasting no more than 3 days. This service is free. ISI is a Christian Organization. However, there is no obligation to participate in any religious activities. If you are interested in airport pick-up or the home-stay opportunity offered by ISI, please contact them at: ISIABQ@isionline.org and clarify the amount of time you need for the homestay. ISI airport pick-up and homestays for students arriving for Spring 2021 will begin at the beginning of January. You must contact ISI at least two weeks in advance of your arrival for the best chance of getting a home-stay placement. (Please report to GEO if you feel any pressure from ISI volunteers to participate in religious activities). ISI also offers permanent house-hunting help, free furniture, cell phone sign-up, free lunches and other helpful services at their International Welcome Center in the Baptist Student Union (BSU) in the two weeks before classes begin. The BSU is at 401 University Blvd. on the northwest corner of Martin Luther King Jr. Drive across from the UNM campus.

○ **Living on Campus: Where to Stay Until You Can Move in to Student Housing**

Students who will live in UNM campus housing (not Casas del Rio or Lobo Village) can move in to their room early for a fee (currently \$30 per night) if they register to move in early. Early move-in normally begins the Tuesday before classes start (Tuesday, January 12th this year). To request early move-in, students must sign a Spring 2021 housing contract with UNM and submit a request for early arrival to UNM Residence Life and Student Housing no later than Monday, January 4. After creating a UNM Net ID, you will be able to sign up for on-campus housing options through your UNM Housing dashboard (<https://unm-residence.symplcity.com/>). To sign up for the early move in option, send an email to housing@unm.edu for instructions. You will receive a confirmation of your arrival request along with instructions on where to check in to housing.

You will not be able to move in early unless you sign up in advance!

For housing questions, contact UNM Residence Life and Student Housing at housing@unm.edu or 505-277-2606.

○ **Living Off Campus: Where to Stay Until You Can Move in to Permanent Housing**

If you will not live in UNM campus housing, OR you will arrive before early move-in starts, you will have to find temporary housing off campus. You can use the ISI homestay, or the GEO website and the enclosed housing handout list local hotels where you can stay before you find permanent housing. Make sure to ask if the hotel has a UNM student discount. The ISI (non-UNM) group also offers transportation and resources to international students to find permanent off-campus housing.

c) Housing Options

If you have a choice of living on or off campus, you should think carefully about the kind of housing experience you want. There are advantages and disadvantages to each that you should consider carefully before you decide. **Please read the enclosed brochure for more information. To view UNM campus housing options, visit <http://housing.unm.edu/> and sign up as soon as possible.** Regardless of the permanent housing option you choose, **you need to be prepared to pay for temporary housing when you first arrive**, use the ISI volunteer temporary home-stay service listed above or contact students from your home country for a temporary place to stay. ISI also offers permanent house-hunting help at their international welcome center at the Baptist Student Union (BSU) building in the week before classes begin. The BSU is at 401 University Blvd. on the northwest corner of Martin Luther King Jr. Ave and the UNM campus.

The enclosed brochure has more information about housing options and issues, as well as important information about signing a lease or housing contract. Information is also available on our website at http://geo.unm.edu/students/life_unm/housing/

III. IMMIGRATION DOCUMENTS & VISA APPLICATION

a) Certificate of Eligibility (I-20 or DS-2019)

Most students will find the Certificate of Eligibility to apply for a student visa and student immigration status enclosed in this mailing (I-20 form for F1 or DS-2019 form for J1.) **Please check this form carefully to be sure all of your personal information is correct (name, date of birth, etc.)** After you read this form, you must complete the student attestation by signing at the bottom of page 1. If you decide not to attend UNM for this semester, or wish to defer to a future semester, please email goglobal@unm.edu and return the enclosed form immediately.

If your immigration document is not enclosed, this should be because either:

- You are coming to UNM from another U.S. institution (called an “immigration transfer” – see section f below for important information about what you need to do)
- OR
- Your immigration documents will be coming from another J1 program sponsor (for Fulbright and other agency-sponsored students – contact the program sponsor for information about your DS-2019)

If neither of these reasons fit your situation and the immigration document is NOT enclosed, email goglobal@unm.edu.

b) Visa Requirements

If you are currently outside the U.S., you should use the enclosed I-20 or DS-2019 form to apply for a student visa at the United States Embassy or Consulate nearest your place of residence only after you are sure you will attend UNM.

Note: Canadian citizens do not require a visa, but must present this form when entering the US from Canada and must pay the SEVIS (Student and Exchange Visitor Information System) fee at least 72 hours before arriving at the border (see below). Non-citizen residents of Canada should check with the US Consulate to find out whether or not they need a visa.

For information on the U.S. Embassy or Consulate(s) nearest you, please see: www.usembassy.gov

c) Required SEVIS Fee

All students must pay a mandatory SEVIS fee. This is a U.S. Government fee, not a university fee, and is in addition to any visa fee. Because the payment of the fee will be recorded in the SEVIS system and it **MUST** be fully processed before you arrive at the U.S. Embassy or Consulate for the visa interview, you must pay it at least 3-business days prior to the visa interview, and you must bring proof of payment to the interview. **The fee is associated with your SEVIS number on the top of your I-20 or DS-2019, so if you already paid the fee with that SEVIS number, you do not need to pay again.** Canadian citizens must present proof of payment of the fee when arriving at the port of entry to the U.S. (they do NOT need a visa). For more detailed information on the fee payment process please go to the SEVIS website at: www.ice.gov/sevis/i901/index.htm

You can pay the SEVIS fee in one of three ways:

- Online at www.FMJfee.com . Use a credit card and complete the online Form I-901. Once you have submitted the payment please print the computer-generated receipt. This receipt will be your proof of payment. Please note that SEVP is unable to accept credit card payments on behalf of students from Ghana, Gambia, Nigeria, Cameroon or Kenya.
- Through Western Union Quick Pay. This option is available in any country where Western Union offers its Quick Pay service. This service allows you to pay the SEVIS fee electronically and directly to the Department of Homeland Security in local currency. You must fill out the I-901 form on www.fmjfee.com before you go to Western Union and record or print the unique coupon number to submit your payment (if someone will pay for you they will also need to enter your coupon number in the Account Number field of the Western Union form to pay) To read the detailed instructions for this form of payment, please go to www.ice.gov/sevis/i901/wu_instr.htm
- Through the mail by submitting a completed Form I-901 and a check or money order drawn from a U.S. bank. The payment confirmation you can print from the FMJ fee website will serve as proof of payment.

d) When to Apply for the Visa and What to Bring to the Consulate

You cannot apply for the visa more than 120 days prior to the date your U.S. program begins (check your I-20/DS-2019 for the program start date.)

Documents you will need to bring with you to the U.S. Consulate and to the U.S.:

- Passport
- Proof of payment of the SEVIS fee

- I-20 or DS-2019 form
- UNM acceptance letter
- Proof of finances for your studies
- Any evidence that you intend to return home when you complete your studies (e.g., proof of property, a job or family in your home country)

Contact the U.S. Consulate before you go to find out how to make an appointment, what the fees are, what additional documents you should bring to the interview, and how long it generally takes to process the visa. A list of U.S. Embassy/Consulate websites can be found at www.usembassy.gov.

Visa interview and processing times can be long no matter what country you come from. Be smart and get your visa appointment as early as possible within the 120-day window!

e) The Visa Interview

GEO recommends the following for any visa interview:

- Be ready to articulate in English briefly and clearly your reason for study in the U.S. and your plan to use your education in your home country after program completion.
- Know how your academic degree will fit into your home country job market.
- Be prepared with the above information, but don't memorize a "speech" which sounds rehearsed.
- Remain calm.
- Ask the consular officer if s/he will review any documents you brought (even if they don't ask for them.)
- In case of a denial, ask that the reason be given to you in writing before you leave the consulate. Only in this way, can you address the U.S. Consulate's concern if and when you return for a second interview. Reasons for a visa denial are found at: <https://travel.state.gov/content/travel/en/us-visas/visa-information-resources/visa-denials.html>
- You may be subject to a security check that will delay the visa application process. Therefore, we highly recommend that you apply for the visa as soon as you receive this form (but not sooner than 120 days before your program begins).
- **Once you are issued a visa, you should verify that all information is correct and does not contain any typographical errors in your name, date of birth, or other biographical information. It is extremely important that your name and biographical information on the visa MATCH your passport and your I-20/DS-2019.** Make sure you are issued the correct type of visa, e.g. F1 or J1, NOT F2 or J2. It is extremely difficult to correct these errors once you have left the consulate and nearly impossible once you have entered the US, so you want to get these errors corrected BEFORE you leave your home country.
- Finally, once you are issued a visa, the consular officer may seal your I-20/DS-2019 in an envelope and attach it to your passport. **You should not open this envelope!** The Customs and Border Protection Officer at the U.S. port-of-entry will open the envelope. **DO NOT PACK THE ENVELOPE IN YOUR LUGGAGE!**

f) Instructions for Students Who are Currently Studying in the US (Immigration Transfer Student)

If you are currently in F1 or J1 student immigration status studying at another school in the U.S. and you will attend UNM with no break or only a brief break in studies (less than 5 months), you will need to process an "immigration transfer" to attend UNM. The UNM immigration transfer form should be provided at the same time as this welcome letter. If you have not received the transfer form, you can get one on our website at http://geo.unm.edu/all_handouts/transfer_form.pdf. Here is what you need to do:

-
- Before coming to UNM, you should visit the international advisor at your current school and let him/her know the date you plan to transfer to UNM. The advisor there MUST set a release date and enter UNM as the school you will transfer to in the SEVIS immigration student tracking system (the “transfer to” school [UNM] and date cannot be changed once the transfer date is reached). Have the advisor complete the UNM transfer form and return it to the Global Education Office at UNM (via email to goglobal@unm.edu). The UNM I-20 or DS-2019 cannot be sent to you until AFTER the release date you set with your current international advisor, so be sure to state clearly on the UNM transfer form if you wish to pick it up upon arrival at UNM or the address to which it should be sent.
 - Within 15 days of the start date on the new I-20 or DS-2019, report to the Global Education Office (GEO), 2120 Mesa Vista Hall to complete the transfer. You must bring your passport, visa, I-94, and all previously issued I-20s/DS-2019s with you. If there is some problem and you will arrive late, you must contact GEO to discuss your situation. Failure to report to GEO with the completed documents within 15 days of the start date may result in immigration problems. If you have not been a full-time student at the last school you were authorized to attend, you should contact the international advisor at that school to discuss how to apply for a reinstatement to student status. If a reinstatement is not possible at your former school, you can contact our office to discuss the possibility of transferring your SEVIS record and requesting the reinstatement through UNM.
 - If you plan to travel out of the U.S. briefly between attending a previous institution and attending UNM and you do not have a valid student visa, you must present the UNM I-20 or DS-2019 form, along with financial proof and proof of your intent to return home, to a consular officer at a US Embassy or Consulate abroad to obtain a student visa (please see above for more information about applying for a visa - Canadian citizens do not require entry visas.) You will also need to show the I-20/DS-2019 form to the inspecting immigration officer upon entry to the U.S. If you plan to apply for the new visa in Canada or Mexico, speak to an international advisor about your situation BEFORE you make the appointment. Applying in these countries may present significant problems or be impossible for some individuals. If you do have a valid student visa and you have not violated the terms of your status, you do not need to apply for a new visa. You will present the UNM I-20/DS-2019 to the immigration officer with your current visa upon re-entry to the U.S.



IV. PREPARING TO COME TO UNM

a) How Soon Can I Arrive?

New students CANNOT arrive more than 30 days prior to the reporting date listed on the front of the I-20 or DS-2019 form. Be sure that you do not arrive earlier than that date or you may be sent back to your home country.

b) What You Need to Enter the U.S.

Do not pack these documents in your luggage; keep them with you:

- Passport with entry visa
- I-20 or DS-2019 form (this may be in an envelope that the U.S. Consulate has given you)

-
- Proof of finances to support your stay in the U.S. (if you are supported by the department you should bring the department's offer letter)
 - Money to cover initial costs (**approximately \$5,000 in bank check or accessible cash via an ATM, debit, or credit card; for safety reasons we do not recommend that bring more than \$1000 in cash**)

According to U.S. law, you must enter the U.S. using the I-20 or DS-2019 from the institution you plan to attend first. If you enter the United States with a form from a university other than the University of New Mexico you may be required to report to that university before you will be eligible to transfer to UNM. Upon your arrival in the U.S. the customs official should review the form and return it to you.

At the U.S. port of entry, a customs official should stamp your passport and indicate the correct immigration status (F1 or J1) on the stamp. **DO NOT ENTER THE U.S. on a B visitor's visa or WB/WT visa waiver or you will be ineligible to study!!!** You will need to print out the record of entry (form I-94) at cbp.gov/I94 every time you enter the US (after you enter). We can show you how to do this when you check in with GEO. This is an important document that records your current legal U.S. immigration status.

Note: Citizens of Canada do not require entry visas, but must present the I-20 or DS-2019 form, financial proof, and proof of payment of the SEVIS fee when entering the U.S. from Canada. Passports are required for all Canadian citizens entering the U.S. in student status. Students who plan to work on campus must have a valid passport. Canadian students crossing at a land port need to be sure that their I-20 or DS-2019 is reviewed by the immigration official AND need to carefully check that the stamp in the passport accurately indicates their F1 or J1 status.

c) Health Insurance

Health insurance is a necessary expense of life in the U.S. and health insurance rules are COMPLICATED! **ALL UNM International students are required to have health insurance for their entire stay in the US!**

Athletic Scholarship students must buy the plan authorized by UNM Athletics. All students are responsible for buying an insurance policy on their own. There is no University student health insurance policy!

EVERYONE should buy an emergency policy to be covered until their US health insurance policy starts. If you are not on an Athletic Scholarship and don't have insurance from a parent or sponsor that covers you in the US, you should buy one of the 4 emergency policies here: www.internationalstudentinsurance.com/schools/university-new-mexico.php to cover you from your date of arrival in the US until March 1st. This will give you enough time to sign up for insurance upon arrival and for that insurance to start. **All four plans on the website meet the minimum requirements, and you can choose the plan that is best for you. Make sure to read the plan descriptions carefully to find out what the insurance does and does NOT cover! Remember that the plans on this site have a waiting period of at least 6 months before they will cover you for pre-existing conditions, so if you have an existing illness, you may need to purchase different insurance to ensure your medical expenses are covered AND YOU SHOULD ALWAYS TAKE CARE OF ANY EXISTING HEALTH PROBLEMS BEFORE YOU LEAVE HOME!**

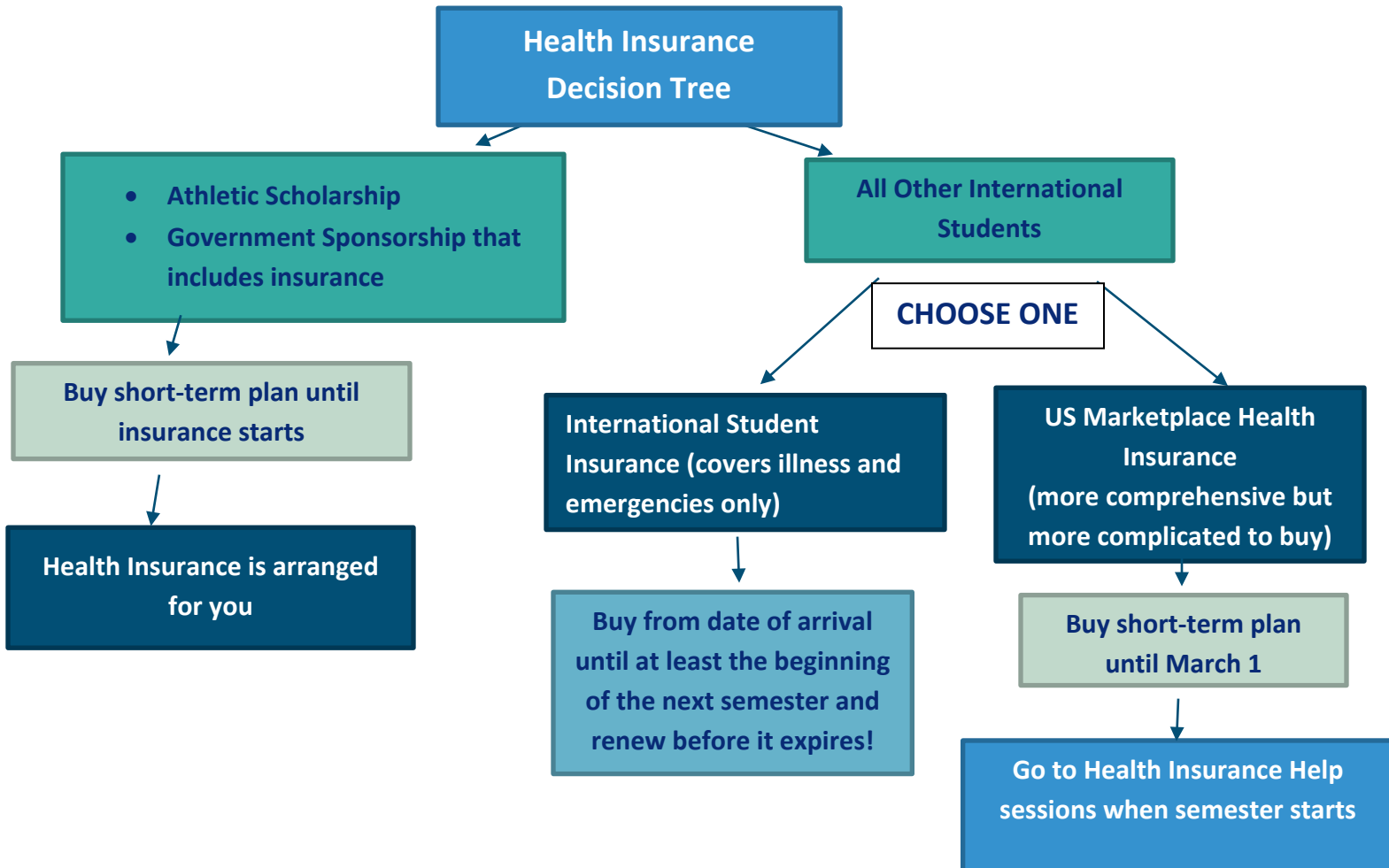
We will provide more information about health care and health insurance at orientation. You will be asked to choose between an International Student (Emergency) Plan and US Marketplace Health Insurance. Regardless, the insurance you buy must be a US-based policy compliant with the U.S. Affordable Care Act (ACA) OR it must cover the minimum requirements below.

DO NOT PURCHASE AN INSURANCE POLICY UNTIL YOU ARE SURE THAT IT MEETS ACA OR THESE REQUIREMENTS:

- \$100,000 of coverage per accident or illness
- \$25,000 for repatriation of remains
- \$50,000 for medical evacuation
- No more than \$500 deductible per accident or illness
- Coinsurance must not exceed 25%

The insurance you buy **CANNOT** have exclusions or limitations within these required amounts (e.g., pharmacy benefits, physical therapy benefits, etc. cannot be excluded or restricted!)

Dental and vision care are not covered by medical insurance in the U.S., so it is recommended that you take care of any vision or dental needs before you come. Visit the UNM Student Health and Counseling Center website: <http://shac.unm.edu/> for current information about health care services for students.



d) What to Do Before You Leave Home

- **DOCUMENTS**

- You should scan all of your important documents before you come to the U.S. and have access to these copies electronically. These include: passport, visa, I-20/DS-2019, financial information, official transcripts, credit card information, international and home country driver's licenses, and birth certificates
- You should also give family or friends at home access to these copies in case you need someone to send them to you.

Remember, you must bring the originals of most of these documents with you to the U.S.

Certified original copies of your birth certificate may be necessary for a driver's permit or state ID.

- **MEDICAL**

- Get copies of your immunization records (Measles, Mumps, Rubella [MMR] is required). You will not need to submit this proof UNLESS THERE IS AN OUTBREAK
- Bring prescriptions for any regular medications (plus several months' worth of these medications)
- Get extra eyeglasses if you need them – these are expensive in the U.S. and are usually not covered by insurance
- Get your dental work done – dentistry in the U.S. is expensive and not covered by insurance
- Buy one of the health insurance policies on the site listed above until at least March 1st to cover you for medical emergencies and then be sure to extend or buy another policy before this one expires!

- **FINANCIAL**

- You should arrive with access to approximately \$5,000 U.S. to cover initial costs (either via ATM or credit card). For your protection, do not carry more than \$1000 in cash.

e) Incoming Student Information & Connecting with Other Students

- **WEBSITE:**

- Detailed information and videos regarding arrival are available on the "Coming to UNM" section of our website at geo.unm.edu/students/coming_unm. Please review this information in detail before you come to Albuquerque.

- **SOCIAL MEDIA:**

- *Facebook:* Ask to be added to the *UNMGlobal* Facebook group to meet other students, look for roommates, or see our events.
- *Instagram and Twitter:* follow us at *UNMGlobal*

VI. REGISTRATION FOR CLASSES & TUITION AND FEES PAYMENTS

a) Registration for Classes

Students will not have a GEO registration hold until January 1, 2021 and then it will be removed after they complete new student check in with the Global Education Office. Undergraduate students also have holds for advisement and New Student Orientation. All holds must be lifted to register for classes.

All students MUST meet with an academic advisor before deciding on classes and should be sure they are registering for classes at the Albuquerque/Main campus. All registration is done online by logging in to <http://my.unm.edu> with your UNM Net ID (see below) after your holds are lifted.

b) Setting up Your UNM Net ID

Go to netid.unm.edu and click on *New NetID Registration* and then *UNM NetID Registration*. You will be asked for your Banner ID, Birth Date, First and Last Name. Follow the instructions to create a Net ID. This will also be your UNM email address (yournetid@unm.edu). Once you set up your UNM NetID it is important to check your UNM email! Important updates and billing information will be sent by the University to your UNM email address.

Note: Pick a Net ID that that is appropriate for school and work. The system will suggest one to you. You will not be able to change it later.

c) Tuition and Fee Payments

You will not be billed until you have registered for classes. When you do register for classes, you will be given a payment deadline in your Bursar account. You must either pay the amount in full or arrange for a payment plan. Bills can be paid from abroad via direct wire transfer or via our Flywire (<https://www.flywire.com/pay/unm>), bank account direct payment, U.S. bank check, credit card (most expensive) or cash.

- Remember that any scholarships may not appear in your account until all arrival paperwork and registration are complete
- Bills paid by credit card will incur an additional 3% fee.
- Bills paid by Flywire will require your UNM ID number and incur fewer charges than credit cards.
- Please check the payment due dates and be prepared to pay upon arrival. Submitting late payments will incur late fees.

Note: Cost will depend on your program, scholarships, number of credit hours and course fees for your individual courses. There is also a one-time \$125 fee for international students in the first semester at UNM.

If a sponsor will pay your bill, please send a copy of your financial sponsorship letter to: thirdparty@unm.edu. For more information regarding payment, contact the Bursar's Office at bursar.unm.edu.

We extend to you our best wishes for a pleasant trip to Albuquerque and trust you will find your stay at UNM to be both challenging and rewarding. We look forward to meeting you and assisting you with your needs as an international student!

Arrival Check List

- Purchased airline tickets to arrive in Albuquerque before Thursday, January 14th
- Have a plan for when you land in Albuquerque (pick-up/home-stay)
- Know when you will come to check-in and orientation
- Paid the SEVIS fee
- Applied for and obtained valid visa in your passport (except Canadians)
- Valid passport with you
- I-20 or DS-2019 with you
- Health Insurance (at least emergency plan to cover you until March 1st)
- Re-read all of the pre-arrival information
- Understand and have a plan to pay your tuition bill upon arrival
- Pack some warm clothing

Extra Credit

- Meet new students on Facebook: *UNMGlobal*
- Review the “Coming to UNM” section on the geo.unm.edu website